



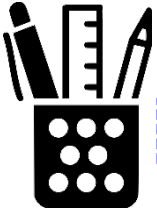
Subjects (Courses) I teach AND (Courses)  
I take for Professional Development



Teacher Life  
3 Parts

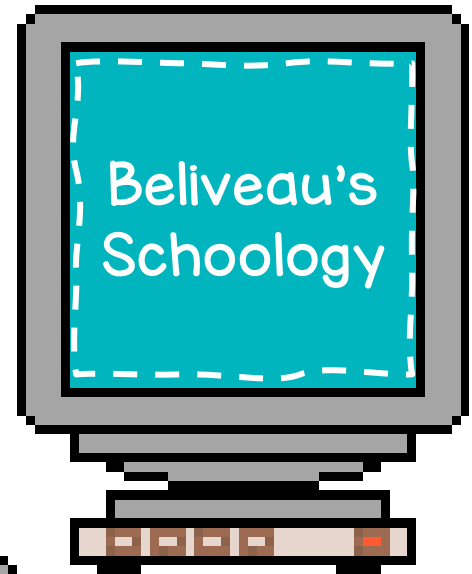


People (Groups) I belong to.



Things (Resources) I use to teach.

Schoolology

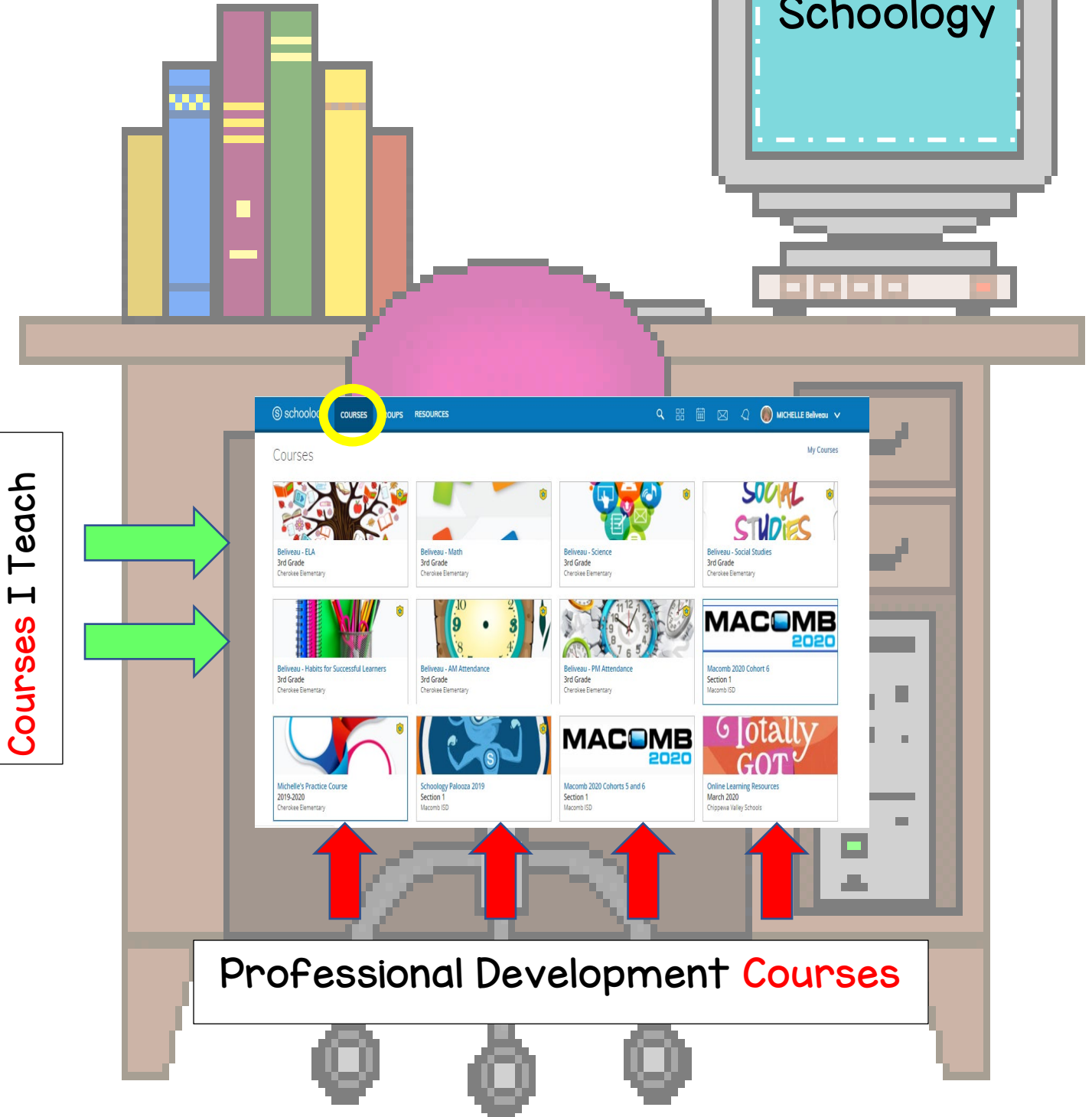




Subjects (Courses) I teach AND (Courses)  
I take for Professional Development

# Courses

Beliveau's  
Schoolology

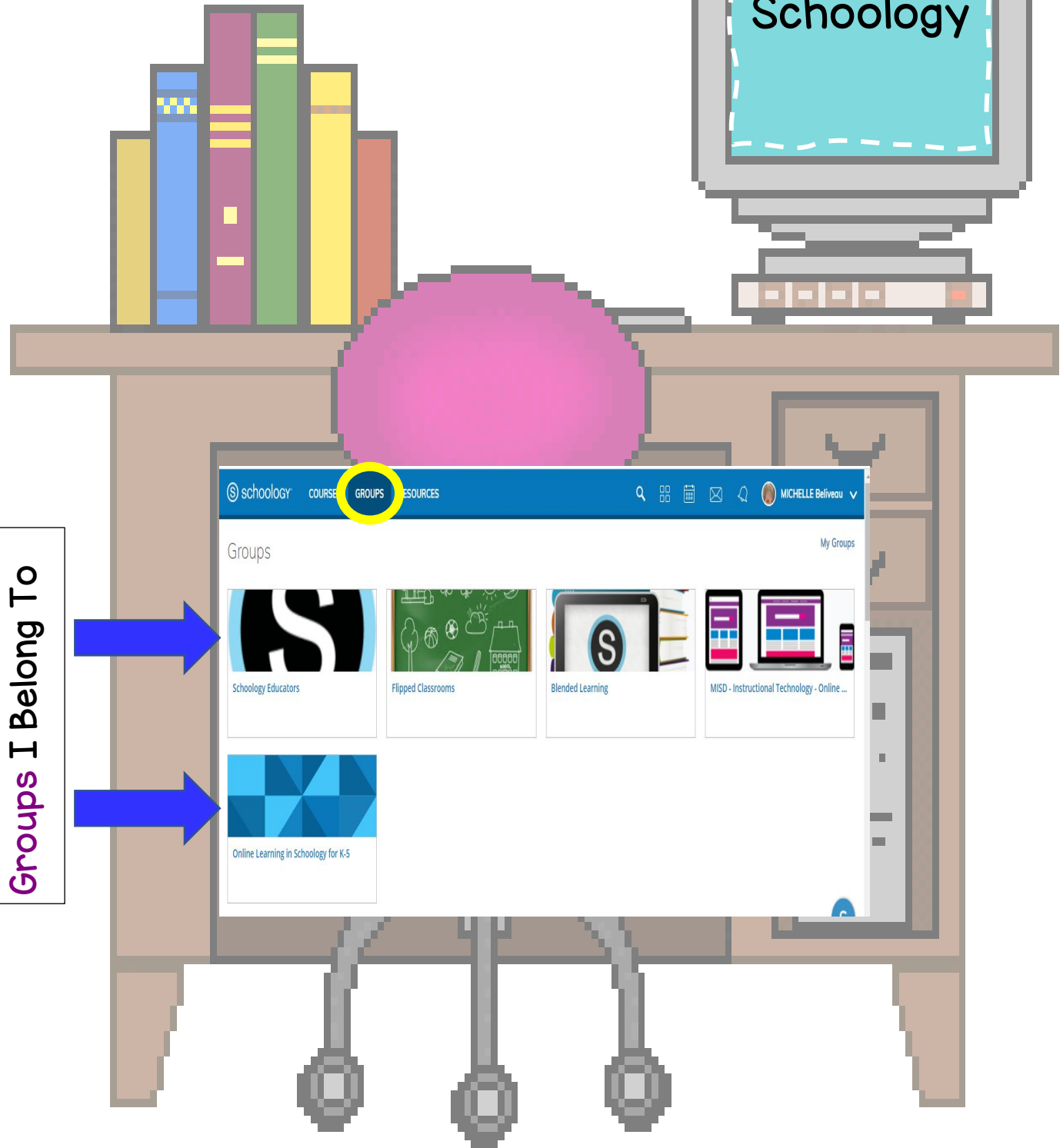




People (Groups) I belong to.

# Groups

Beliveau's  
Schology



Groups I Belong To

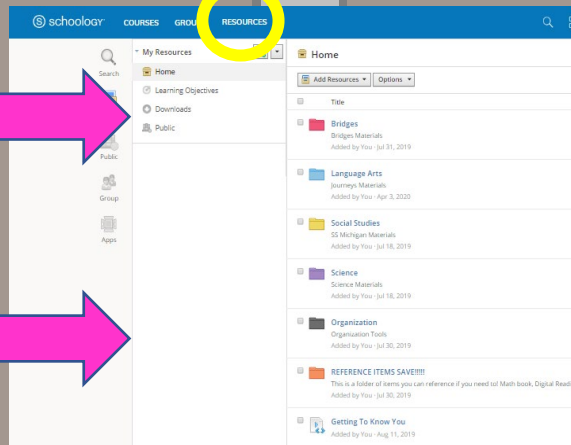


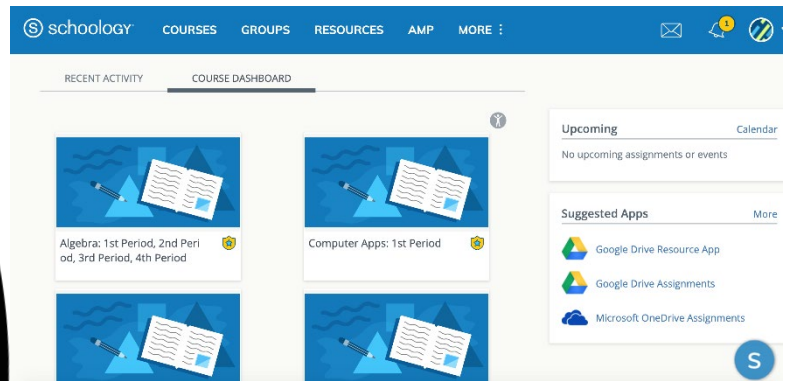
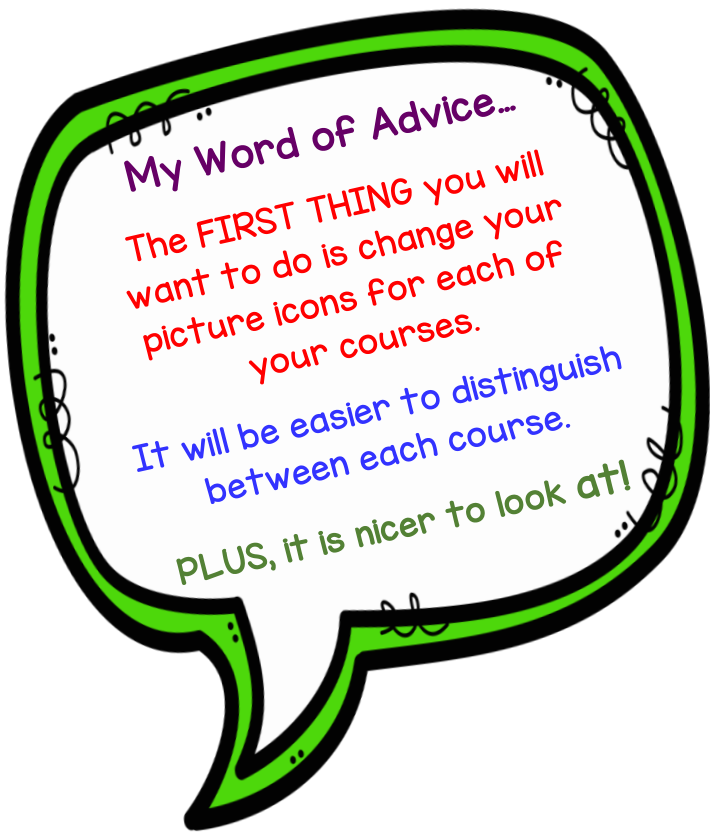
Things (Resources) I use to teach.

# Resources

Beliveau's  
Schology

Resources I Use

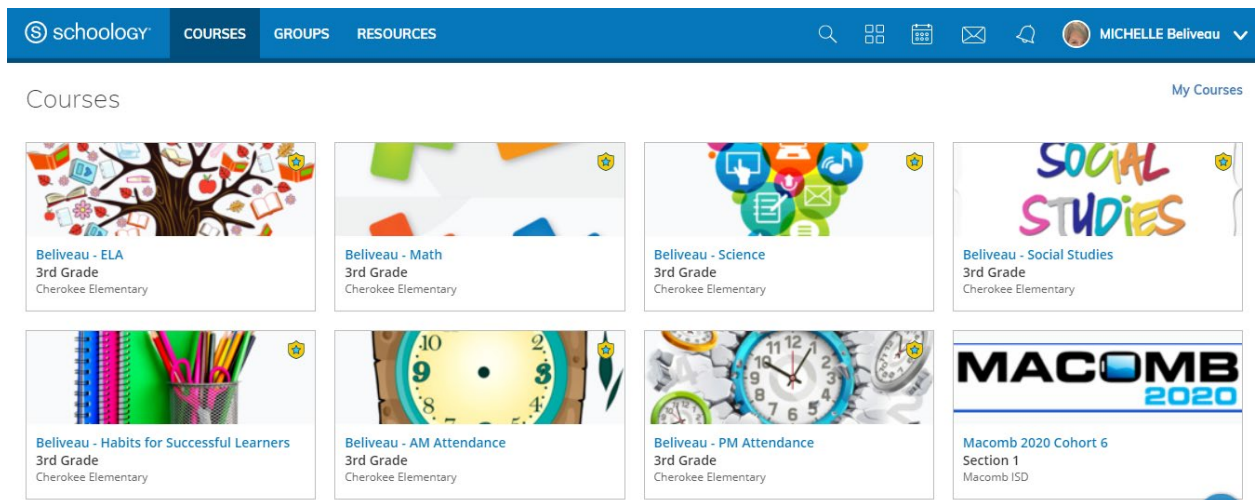




Go From This

To

This

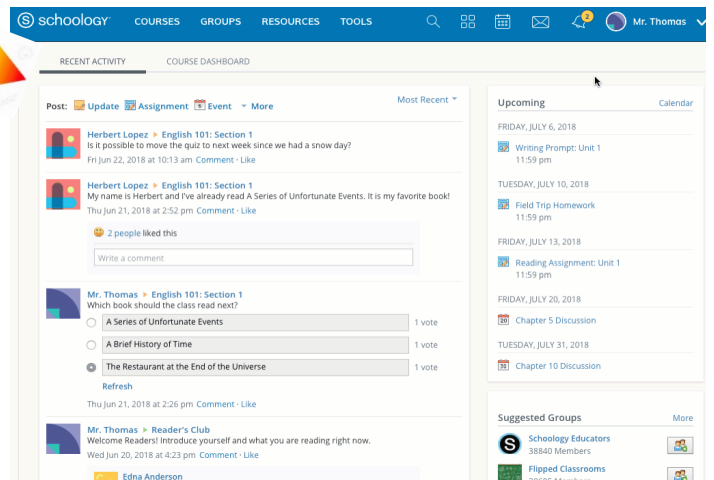


Click Picture for an interactive view

My 2<sup>nd</sup> piece of Advice...

The **SECOND THING** you will want to do is **LINK ALL YOUR ACCOUNTS!** (TEACHER & PARENT)

You will then only have **ONE** login and be able to switch to each account from the drop down menu.



1. Click on your name as it appears in the top right corner of Schoology.
  2. Select Settings.
  3. Click Link Accounts.
  4. Enter your credentials for your *other* account; ie the username or email address and password you use to log into the account you are not currently logged into.
- Click Link Account to complete.

