


A stylized illustration of a rocket with a red nose cone and grey body, launching upwards and leaving a large, billowing white cloud trail. The background is a solid yellow color.

**NAGC**  
**Indianapolis**  
**11/19/22**

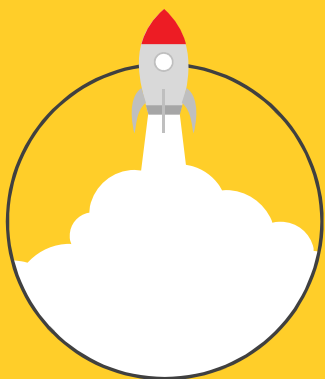
**Leaders Who Make a  
Difference: Expanding  
Your Influence in Gifted  
Education**

**Dan Shepherd, Missouri Western State University**  
**Presenter**

A stylized illustration of a rocket with a red nose cone and grey body, launching upwards and leaving a large, billowing white cloud trail. The background is a solid yellow color.

**Welcome!!!**

Thank you for choosing this  
session. I know you had options.  
I am Dan Shepherd, a professor of  
teacher training at Missouri  
Western State University.



What leader inspired you?

How did s/he do it? Can you replicate this?

## Leader-Identifier Activity

A Repeated Educational Leadership Activity

Activate prior learning by discussing best leaders with a peer.

Synthesize final summary of three traits with whole class.

Develop list of top three characteristics of best leaders.





The book cover is red with white text. It features the authors' names at the top, the title in large letters, and a subtitle at the bottom. The cover is framed by a thin white border.

1. You Make a Difference
2. Credibility Is the Foundation
3. Values Drive Commitment
4. Focus on the Future
5. You Can't Do It Alone
6. Trust Rules
7. Challenge Is the Crucible
8. Lead by Example or Don't Lead
9. The Best Leaders Are the Best Learners
10. Leadership Is an Affair of the Heart

# Do You Know Your Vision?

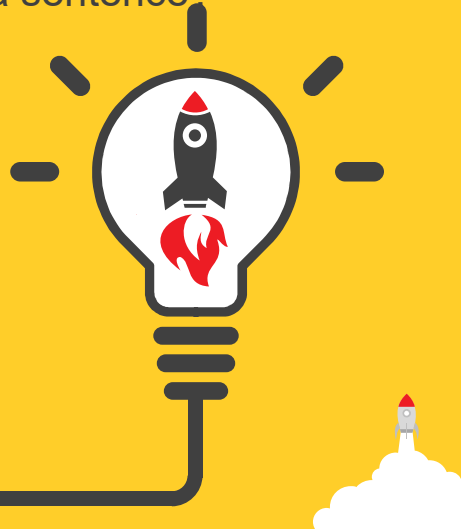
Really? Can you state it in a sentence?

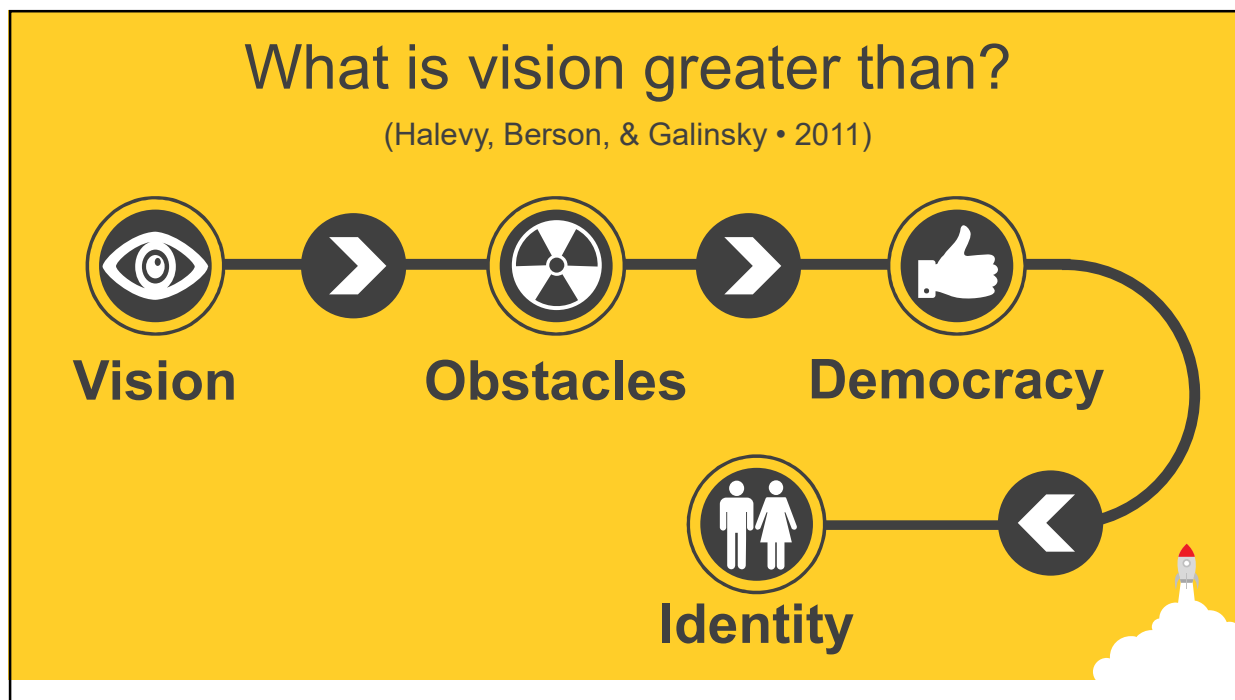
**1**

Think for a moment to compose the perfect Sentence Summary of your program's vision.

**2**

Determine with a peer whether your vision fully matches the vision s/he would have stated.



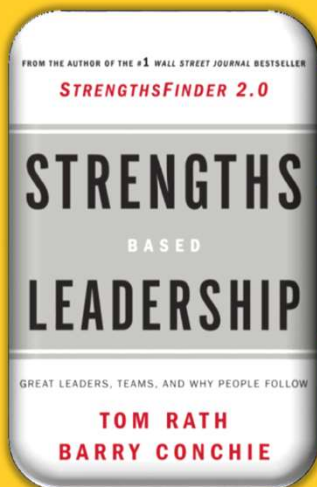




**QUESTION:**

**How do football coaches form  
Collaborative teams?**

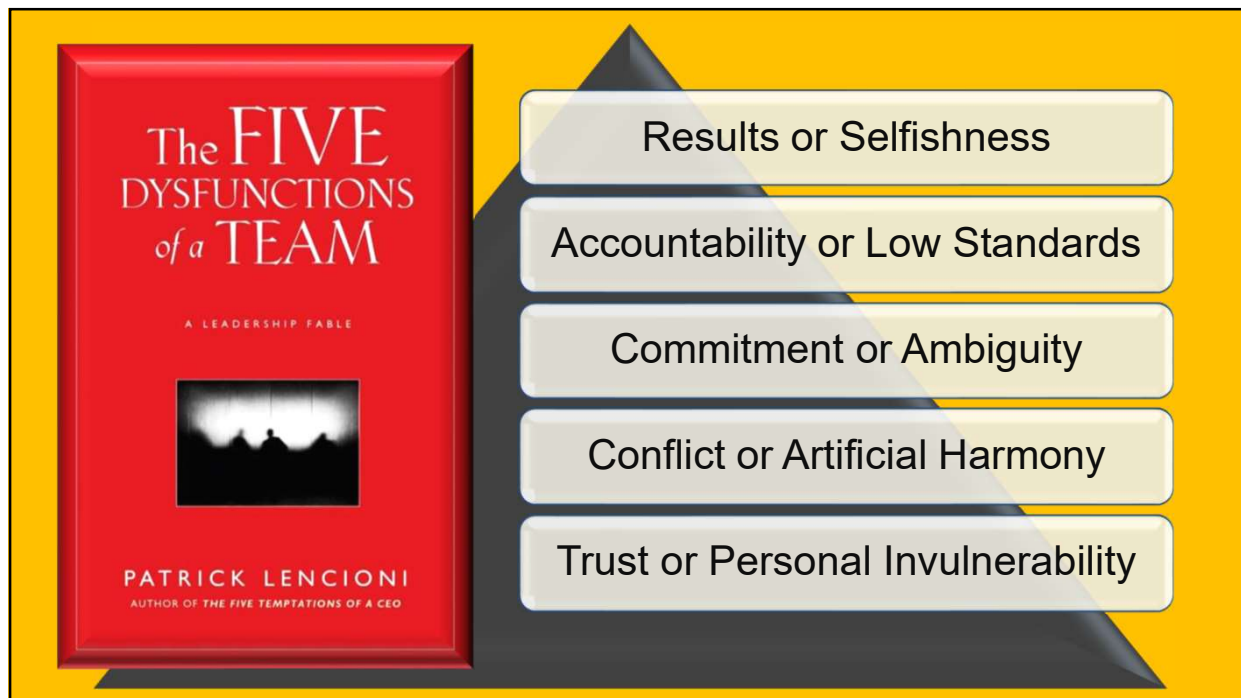
## Strengths-Based Leadership



**Football coaches  
place players in their  
area of strength.**

**Football coaches  
deliver news up close  
and personal.**





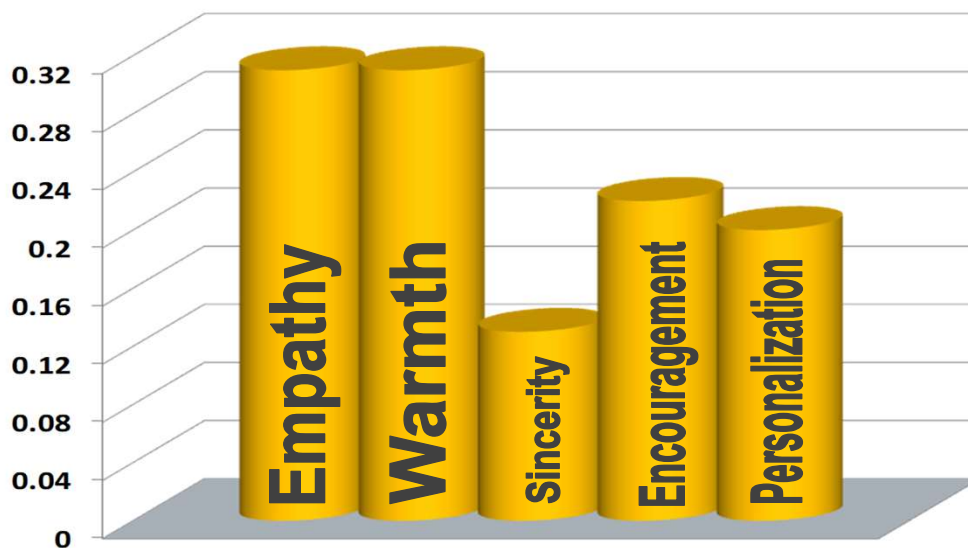
## What does research say about relationships?

1000 studies  
1948 to 2004  
355,325 students

"Learner-Centered Teacher-Student Relationships,"  
Cornelius-White, Review of Ed. Res., March 2007

The bottom section features three overlapping portraits of individuals: a man with grey hair at the top, a woman with brown hair at the bottom left, and a man with glasses at the bottom right. These portraits are overlaid with a pattern of yellow diamond shapes, some solid and some outlined, creating a geometric design.

## Developing Relationships

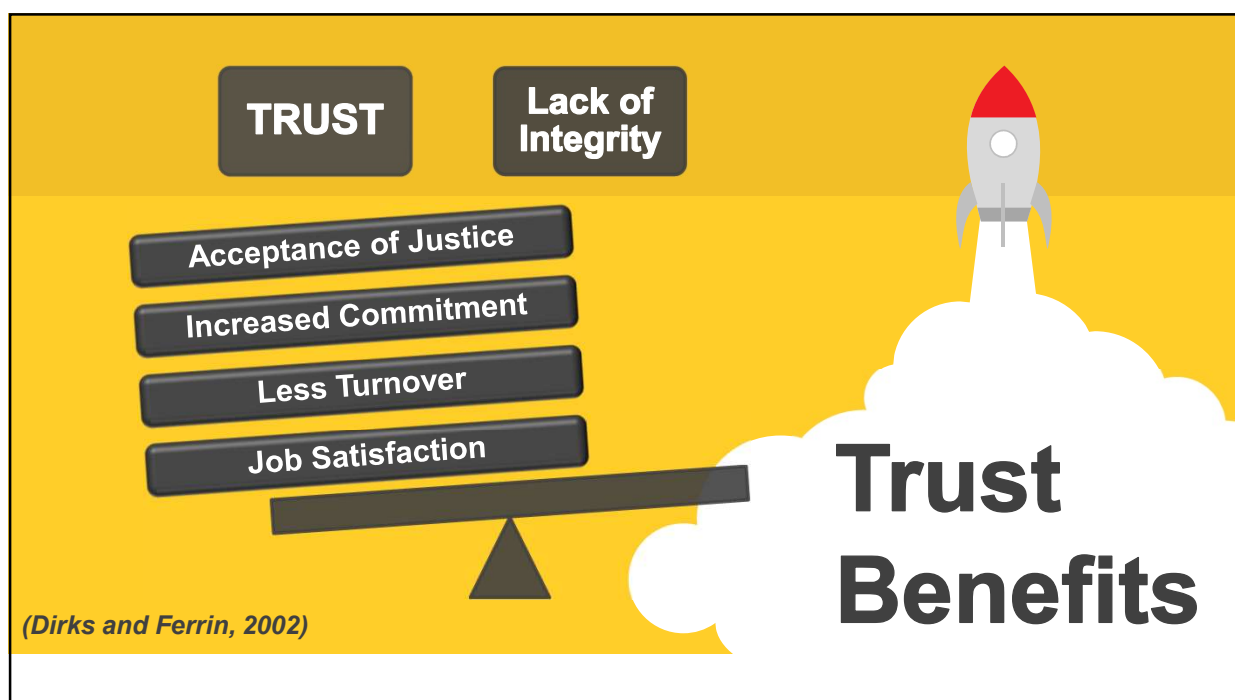


## Popcorn Response



What would it take for your unit to have super strong and super beneficial professional relationships?







When have you seen trust developed well, and when have you seen a lack of trust hurt an organization?

## Lost Trust



**Oh, what might have been?**



**You can't get our best if you're not giving your best.**

